



Parks
Canada

Parcs
Canada

Canada

Swift Fox and the Parks Canada Agency Perspective

Pat Fargey Grasslands National Park



Talk Objectives

- Swift Fox as a metaphor of our Trans-boundary Reality
- Scan Horizon for other Trans-boundary issues

What about those swift foxes?



Distribution Prior to Reintroduction



Swift fox releases 1983-97

942 foxes

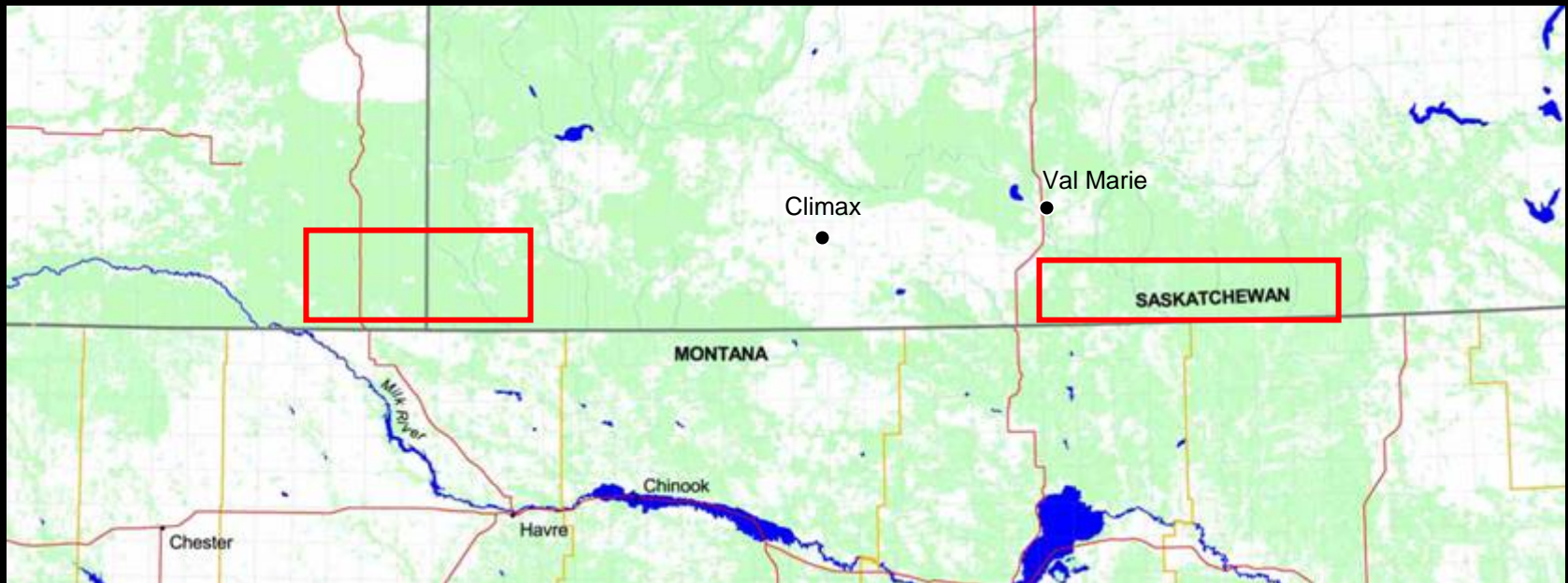
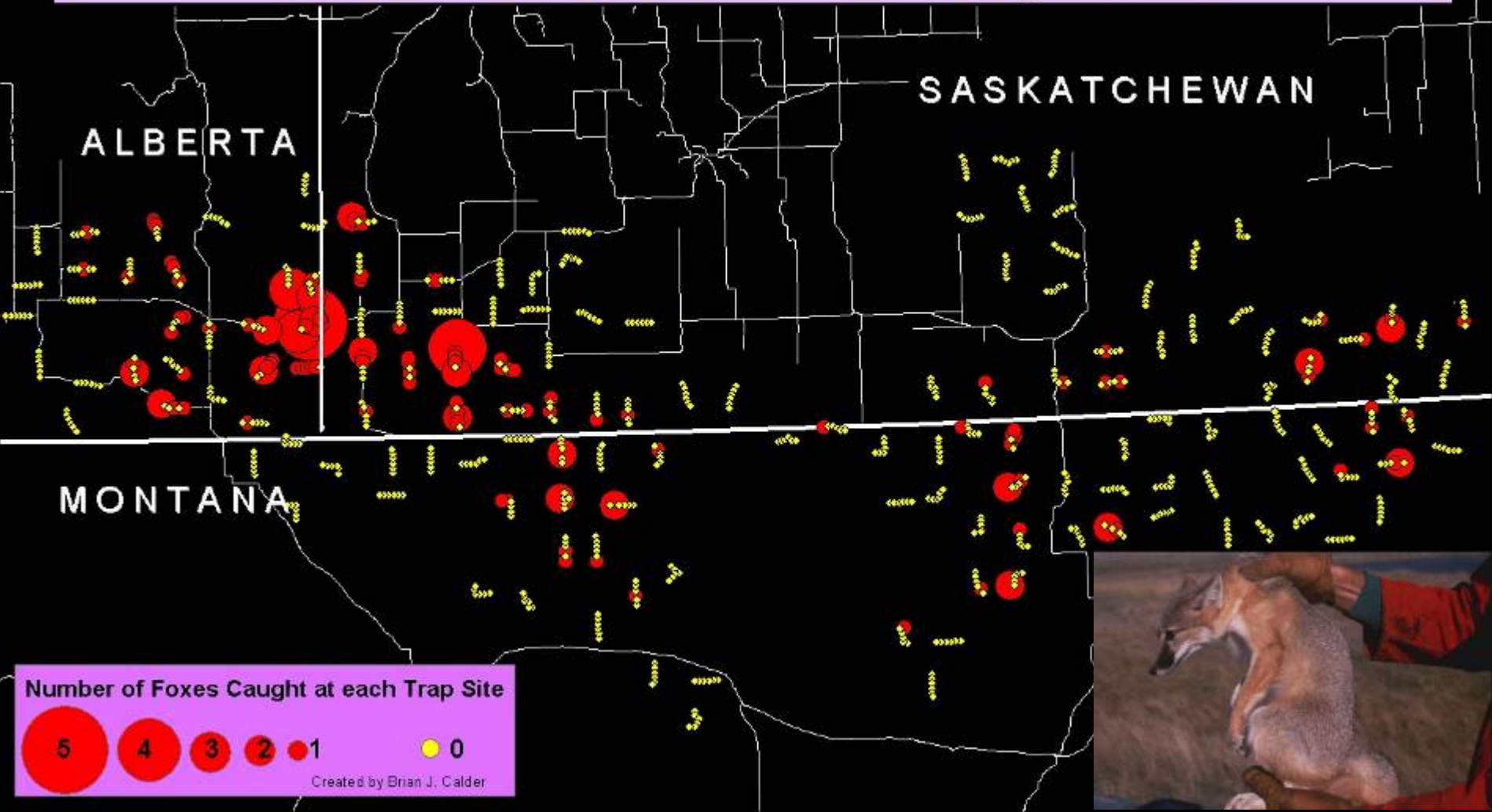




Figure 3. Location of trap sites used during the census. Exact UTM locations are located in Appendix 3.

2000-2001 Swift Fox Trap Lines

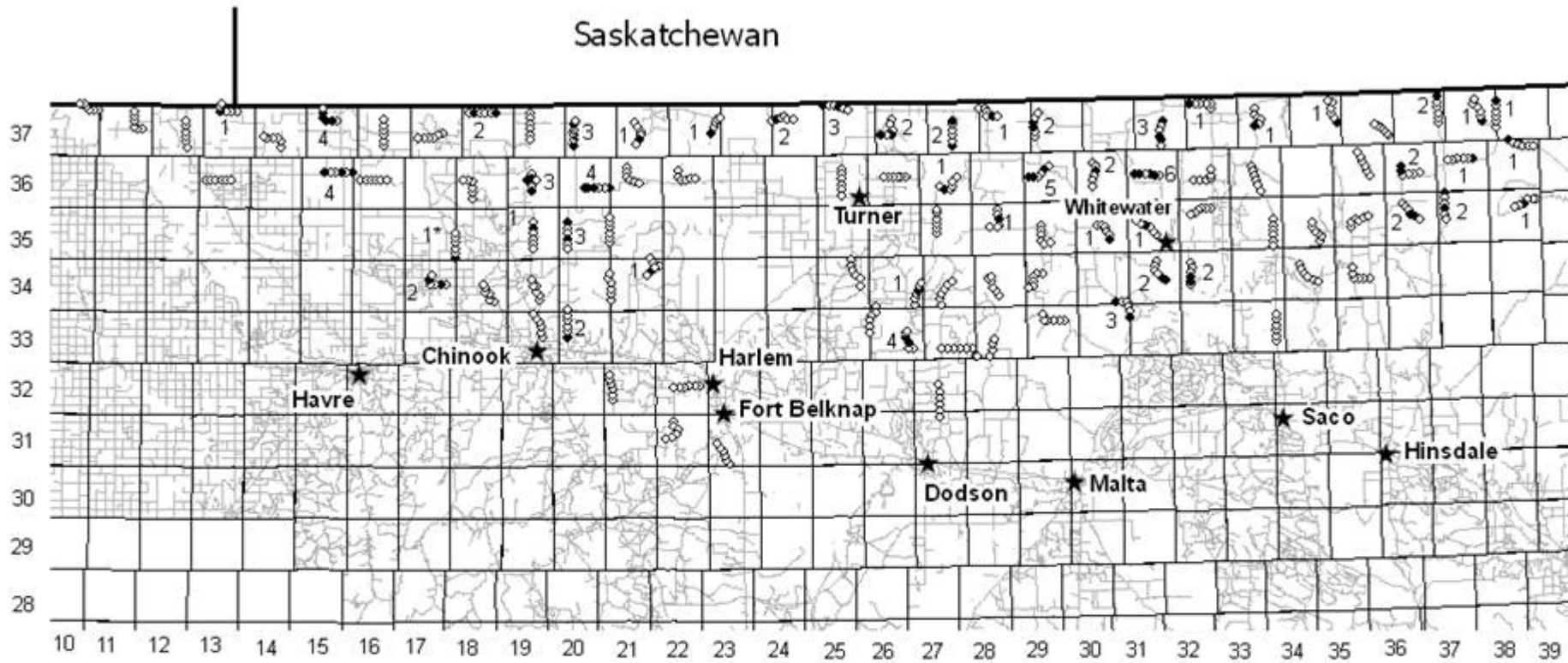


2005-06 Survey

- 100% of captured foxes were wild-born
- Canadian population unchanged (656 vs 647)
- Montana population has increased from 221 to 515

** Montana population spreading south while Canadian population is not spreading north

Saskatchewan




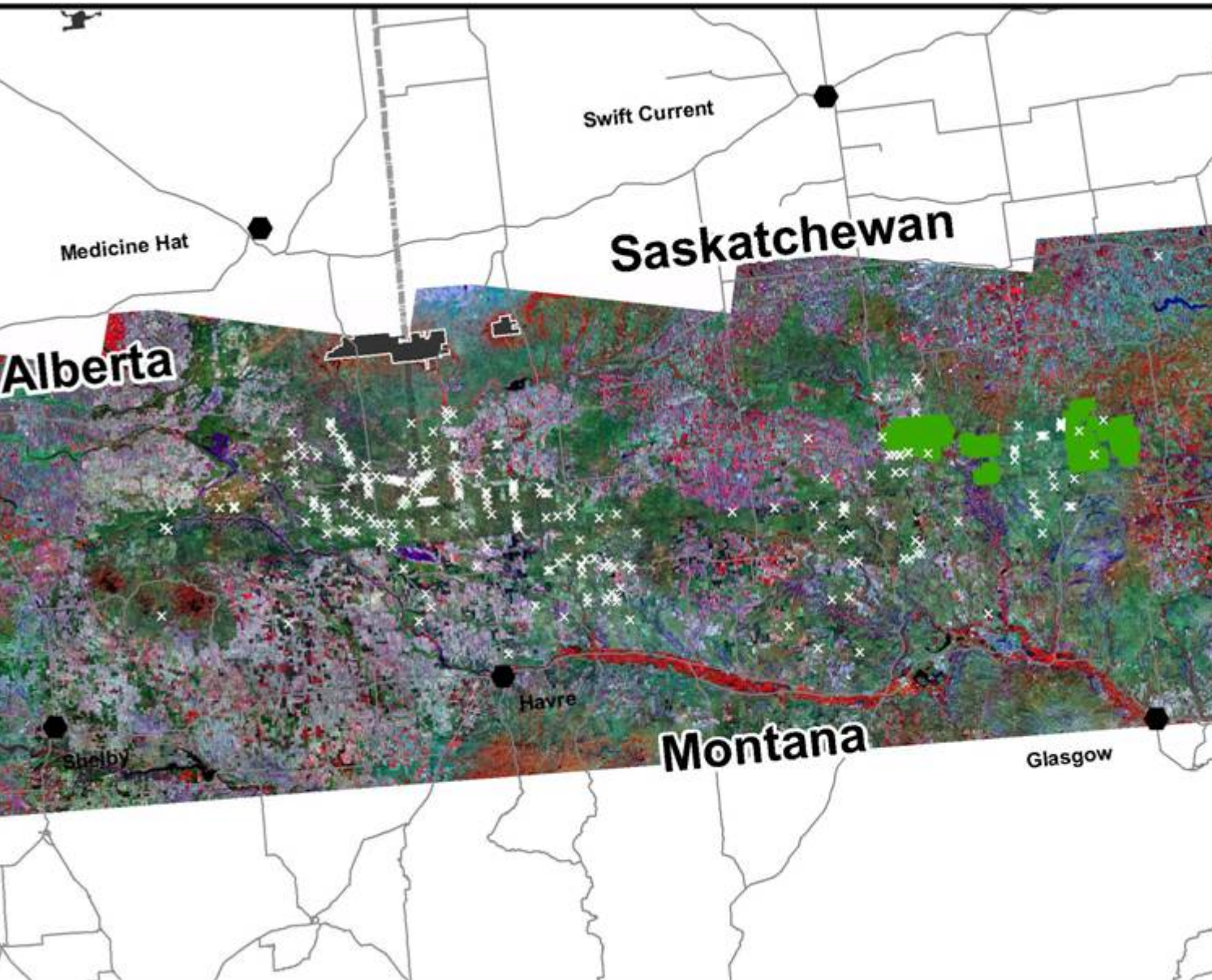
Montana

Legend

- ◇ Trap location
- Swift fox captured in trap
- ★ Towns
- 1 Number of swift foxes captured
- Roads
- ▭ Township and Range Boundary
- ▭ Provincial or Federal Boundary



0 5 10 20 Km




Known Swift Fox Occurrences

Known Swift Fox locations 1996 to 2000

● Cities and Towns

— Roads

- - - Political Boundaries

■ Grasslands National Park

L7_red_green_blue_453.jp

RGB

■ Red: Band_1

■ Green: Band_2

■ Blue: Band_3

0 9 18 27 36


■
Kilometers


Trans-boundary Scan


Saskatchewan

Montana

How about Oil and Gas?

 Grasslands National
Park of Canada

 Cultivated

 Not Cultivated

0 4 8 16 Kilometres

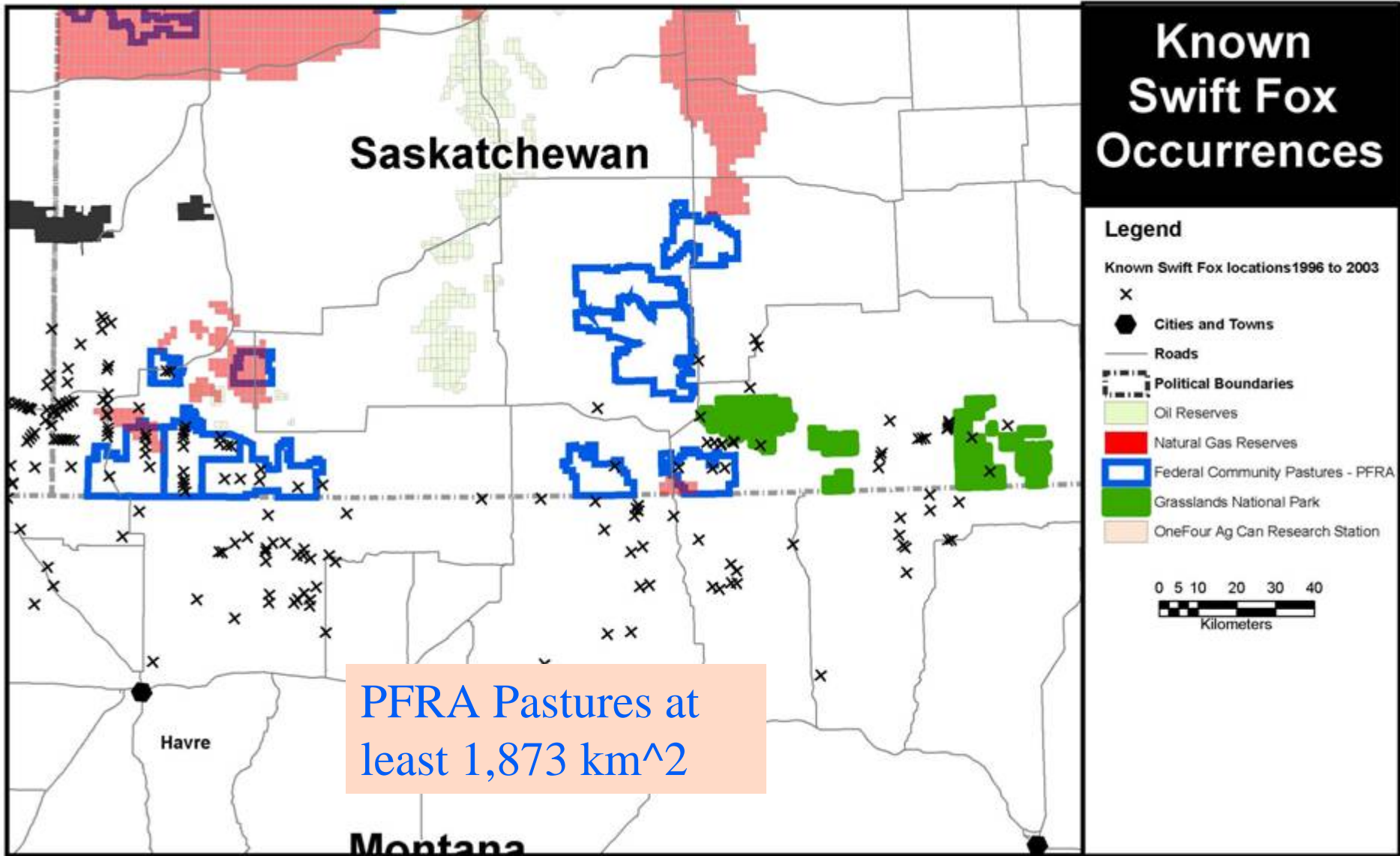


0 2.5 5 10 Miles

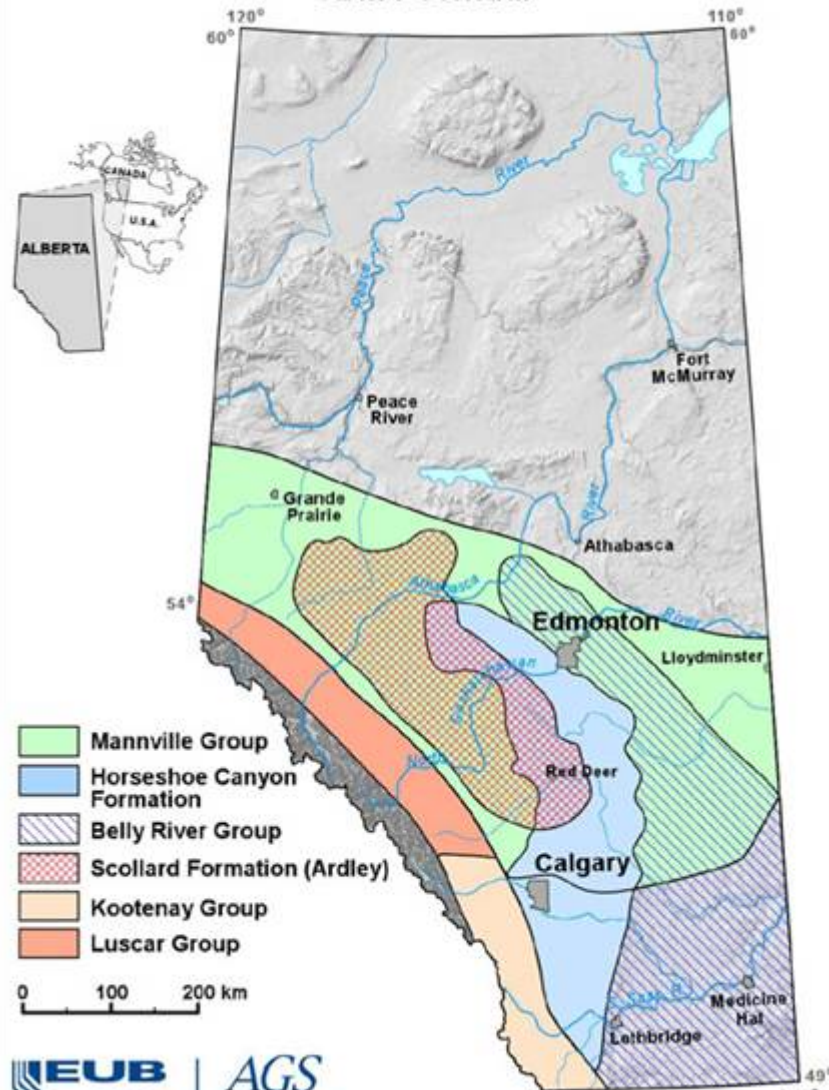


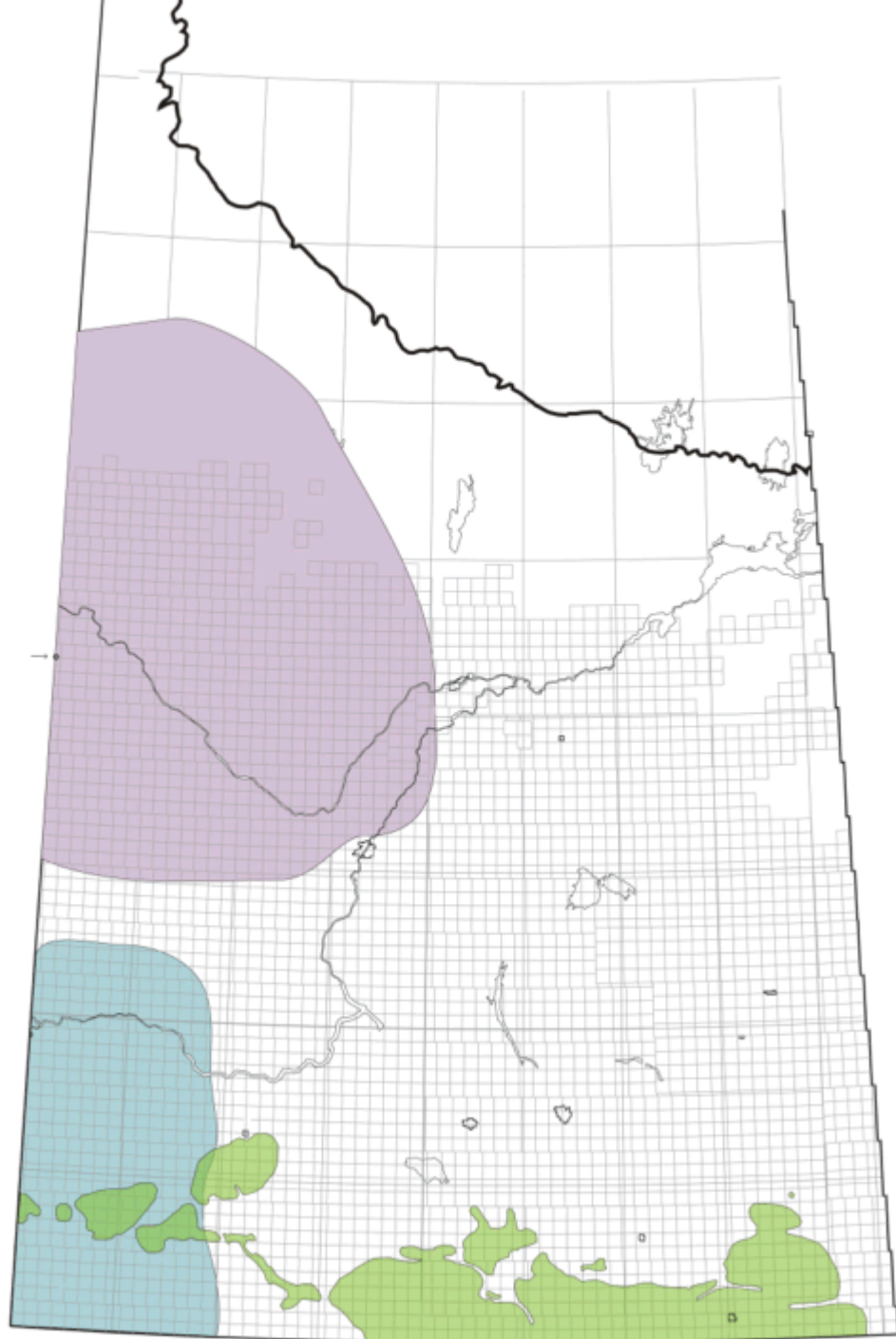
Data provided by:
Saskatchewan Environment
Parks Canada
US Bureau of Land Management - Montana
Montana Fish, Wildlife & Parks

● Malta



Stratigraphic Intervals Containing Coal Zones with CBM Potential





Will Coal Bed Methane look like this?



Research Needs


- Will be developing a proposal to look at the effects of O&G on Swift Fox
- Research on effects of wind farms on Sfox in North Valley County?

Trans-boundary Scan

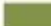
Saskatchewan

Montana

Planning Scale?

 Grasslands National
Park of Canada

 Cultivated

 Not Cultivated

0 4 8 16 Kilometres



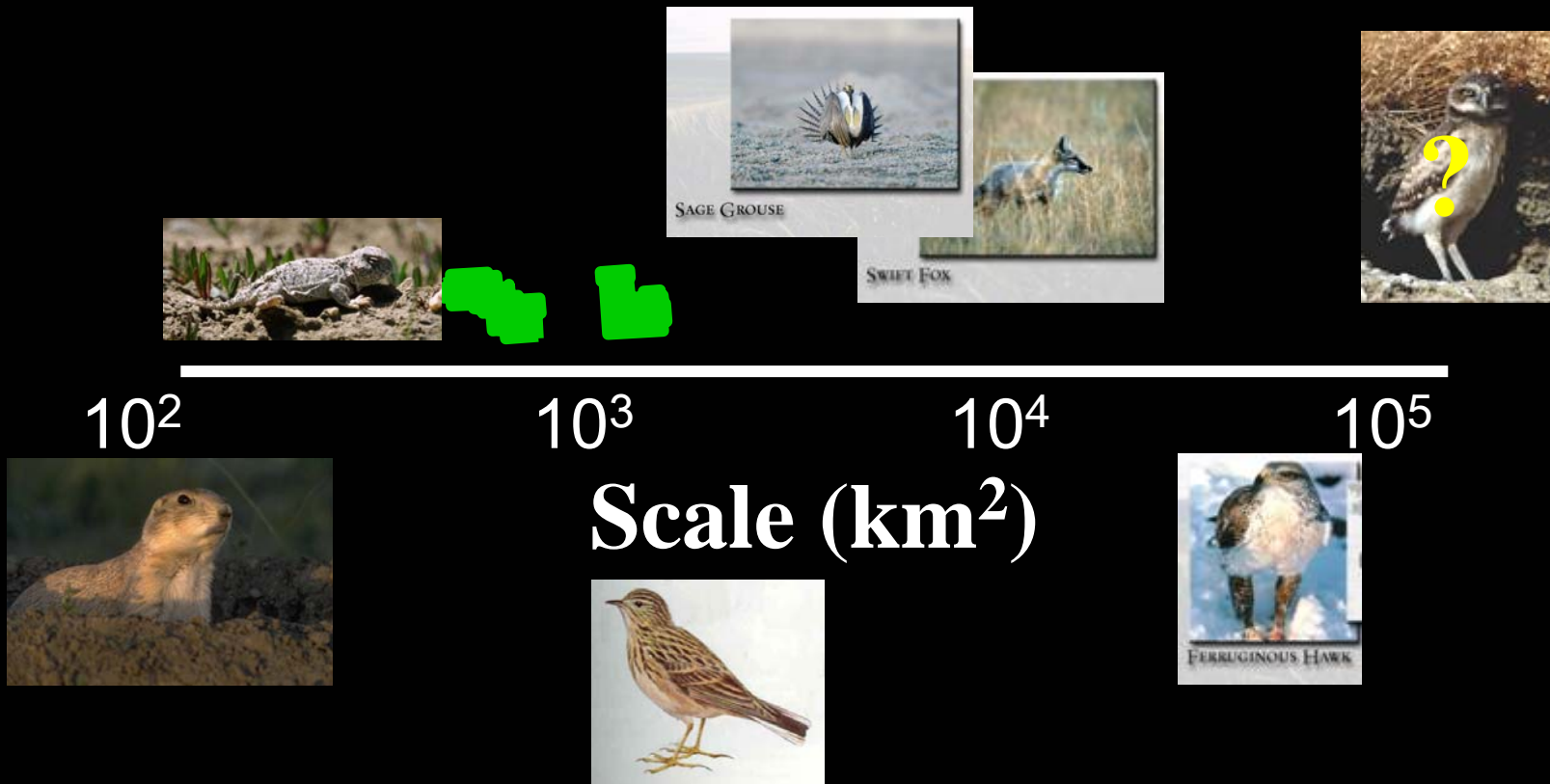
0 2.5 5 10 Miles



Data provided by:
Saskatchewan Environment
Parks Canada
US Bureau of Land Management - Montana
Montana Fish, Wildlife & Parks

● Malta

Minimum Appropriate Planning Scale



Trans-boundary Scan

Saskatchewan

Montana

Grasslands National
Park of Canada

Cultivated

Not Cultivated

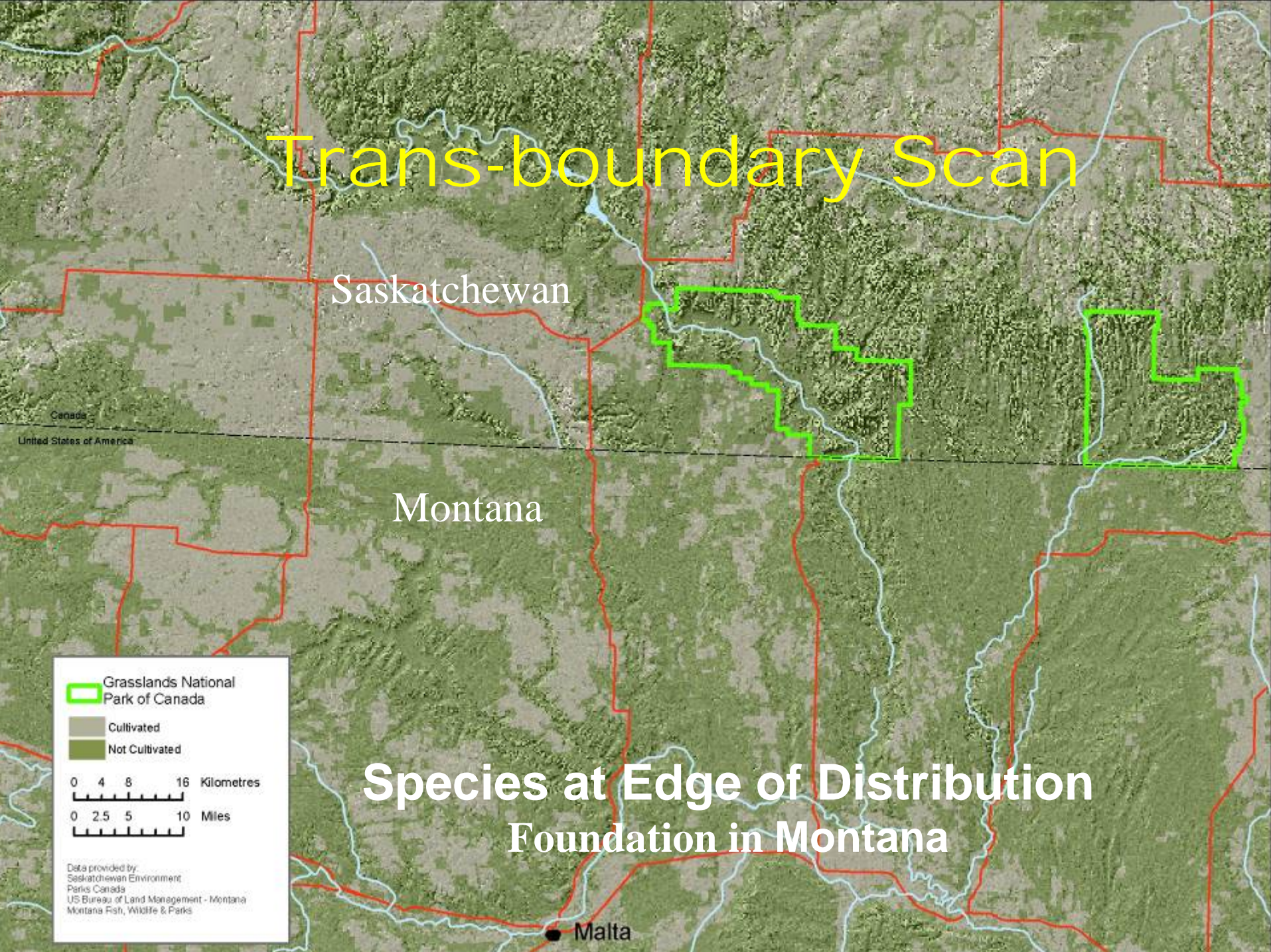
0 4 8 16 Kilometres

0 2.5 5 10 Miles

Data provided by:
Saskatchewan Environment
Parks Canada
US Bureau of Land Management - Montana
Montana Fish, Wildlife & Parks

Species at Edge of Distribution Foundation in Montana

Malta



Mormon Metalmark Butterfly





25.07.2006 10:44

SPECIES AT RISK

- 5 ENDANGERED; 2 NOT REGULAR BREEDERS
- 4 THREATENED
- 7 SPECIAL CONCERN



Conclusions

- Tight ecological linkages North and South
- While have relatively intact ecosystems there are also significant threats
- Looking for opportunities to collaborate
- Sfox great illustration of the power of international cooperation in this region.



For conference
information contact:
Website: www.pcesc.ca
Email: pcesc2007@sasktel.net

