

*The Social  
Components of  
Transboundary  
Conservation  
Planning*



**Shannon Christie**

Ph.D. Candidate

Department of Geography  
University of Saskatchewan

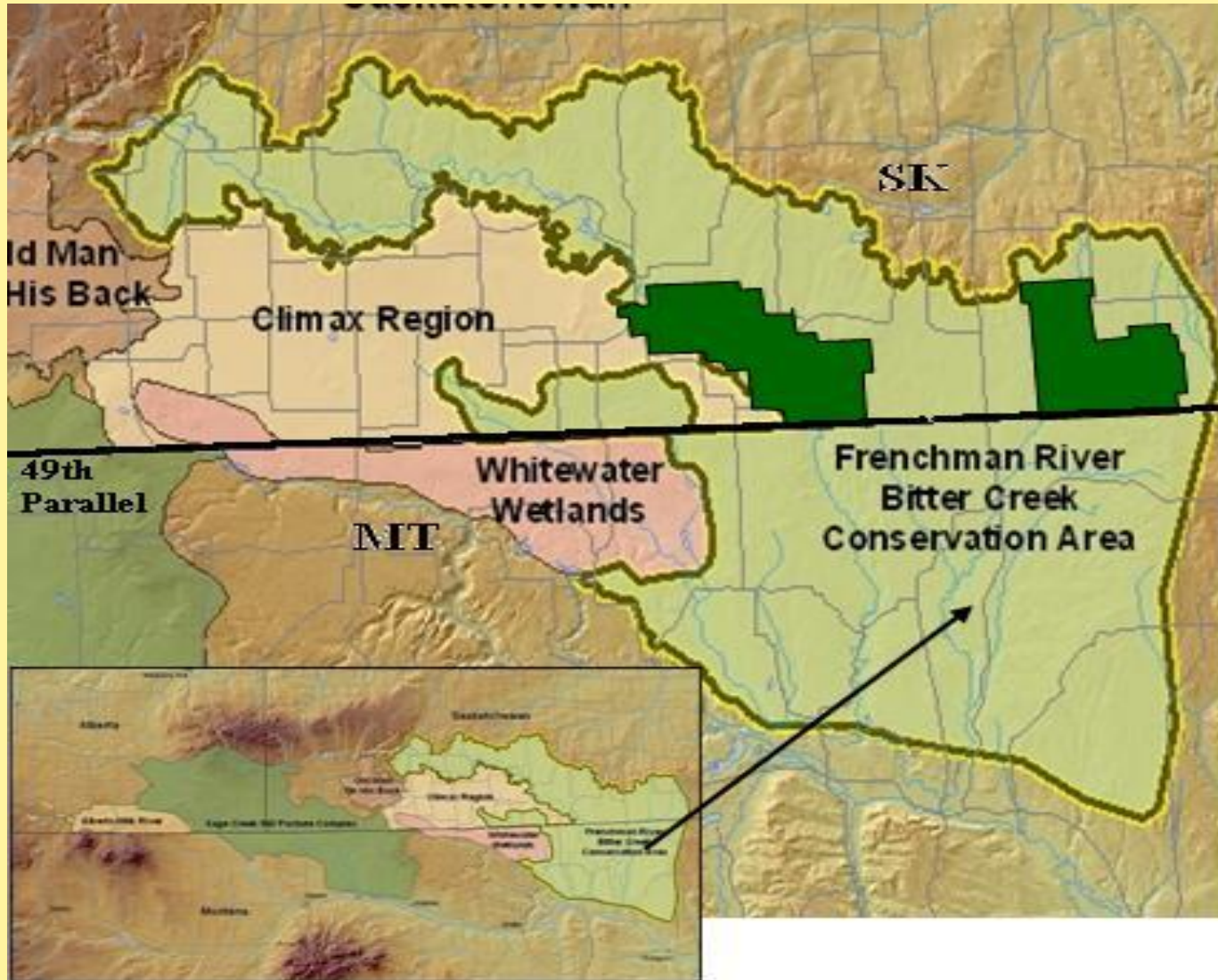


# Ph.D. Project Description - Context

- North-South vs. East-West linkages in North America
- Ecosystem approaches are complicated across international political borders
  - Institutional/legal differences?
  - Co-ordination? Implementation?
- Implications of a shift to ecosystem-based approaches
  - dislodging of entrenched power structures?
  - re-examining of existing resource allocations?
  - threatening of traditional livelihood systems?
  - challenging existing institutional arrangements?



# Ph.D. Project Description - Study Area



Source: Parks Canada



# Ph.D. Project

## Description - Purpose


---

*“To investigate the suitability of ecosystem management and (eco)regional planning initiatives for bringing public, private and civic actors together to address social and ecological concerns in a holistic way – considering whole ecosystems and the linkages between ecological and socioeconomic systems – in a transboundary environmental management context”*



# Research Questions

- 1) Do the 'borderland' and 'transition zone' conceptualizations of the region justify a(n) (eco)regional planning approach in place of politically-defined management zones and regimes? If so, how? If not, why not?
- 2) Can (eco)regional planning establish appropriate governance arrangements in a transborder region (Canada-U.S.; Saskatchewan-Montana)? What are the key obstacles to ecosystem approaches to management, and at which scale(s) do they manifest?



## Research Questions – Cont'd

- 3) What are the implications of (eco) regional planning for institutional arrangements for environmental management, such as government planning and management agencies?
- 4) What are the implications of (eco) regional planning for existing property regimes and the maintenance of traditional livelihoods in the region?

# Research Methods – Content Analysis

Contemporary and Historical Maps	Change over time?
Legislation/Regulations/Institutions	What is (not) there? Differences between Canada and the U.S.?
Interview Transcripts (Public Agency)	
Interview Transcripts (Public Agency)	What has been proposed/adopted? Differences between countries? Origin of the Ecoregion Idea? Who supports/opposes?
Management Plans; Policy Papers, Project Proposals	
Community Newsletters	
Census Data	Who?
Previous Data (Questionnaire Surveys)	Who? Laws/institutions in place/lacking? Strategies proposed/adopted? Recurring fears?
Minutes of (Community) Meetings	Recurring fears? Shared concerns across the border? Region identified with? Origin of Ecoregion idea? Who supports/opposes?
Community Newsletters	
Interview Transcripts (Community)	

***Other Sources??***



# Research Methods – Sampling for Interviews

- **Public Agency Stakeholders**
  - Parks Canada (SK) and the Bureau of Land Management (MT)
  - Use of established relationships for “entry”
  - Purposive Sampling – known management positions
  - Snowball Sampling
- **Community Stakeholders**
  - Oil and Gas Representatives
  - Community selection based on similar characteristics (size, economy, sociodemographic profile) and previous research (SK)
  - Snowball sampling of community stakeholders (First Nations, Agricultural, “Lay” communities)
- **ENGOS**
- **Other Stakeholders? Other Modes of Entry?**




## Research Methods – Sampling for Interviews Cont'd

- ‘Who’ and ‘Where’ shape the issues that come forward
- Finding the ‘Who’:
  - Politically – by RM
  - Geographically – by catchment area
  - Socially – by interest group
  - Other?



# Research Methods - Interviews

- Interview schedules prepared following initial content analysis of maps/documents and examination of previously used survey questionnaires
- Public Agency Stakeholders
  - Nature of existing institutions, policies, regulations
- Community Stakeholders
  - Different questions depending upon Group (Industry, First Nations, Agricultural, Lay communities)
  - Perceptions of land tenure; Level of satisfaction with current environmental planning/management processes; Attitudes towards conservation; Linkages between conservation and resource access/allocation; Implications of conservation for their livelihoods



# Research Methods - Other

- Immersion in the communities under investigation
- Attendance/Observation at public meetings
- Community Workshops/Focus Groups
  - Organized following identification of stakeholders through interviews
  - Use of existing networks?
  - Ways to facilitate/expand participation?



## Placement in "Crossing the Medicine Line"

- *Who* does transboundary conservation planning affect? How?
- Demographic/Social/Economic influences on the implementation of transboundary conservation planning



# Thank-You!

- Feedback/Questions?
  - Other sources?
  - Other stakeholders?
  - Other ways to find/identify stakeholders?
  - Other ways to organize workshops?
  - Other data needed in the context of ‘Crossing the Medicine Line’ that is not encompassed by the Ph.D. project?